



# Co-PED

## Plaine Commune meeting

2-3-4 April 2025

green  
Fonds  
d'Énergie  
Culturelle  
kom  
mon

POT  
KOMMON





**POT** ressources  
coopératives  
artistiques et culturelles  
**KOMMON**



**green**  
Fonds  
d'Énergie  
Culturelle  
**kom**  
**mon**



**Juan Tuerel**

[Juan.tuerel@plaine-energie-citoyenne.fr](mailto:Juan.tuerel@plaine-energie-citoyenne.fr)

**Laura Aufrère**

[Laura.a@lamain-fonciere.coop](mailto:Laura.a@lamain-fonciere.coop)

**Clara Sanchez**

[clara.sanchez@plaine-energie-citoyenne.fr](mailto:clara.sanchez@plaine-energie-citoyenne.fr)

**Vincent Guimas**

[vincent.g@greenkommon.eu](mailto:vincent.g@greenkommon.eu)

**Josephine Dresler**

[josephine.d@lamain-fonciere.coop](mailto:josephine.d@lamain-fonciere.coop)

**Rémy Prat**

[prat.remy@orange.fr](mailto:prat.remy@orange.fr)



Alternative & Independent Cultural Places (AICP) embody essential commons dedicated to art & culture. They maintain cultural spaces where dynamics of culture and citizenship - rooted in social and solidarity economy - can rise and flourish, contributing to the development of sustainable territories. However, the real-estate pressure (urban renewal and speculation) endangers their capacity to maintain a long term occupation of their building. This precarious position hinders their capacity to contribute to cultural citizenship and makes them vulnerable to commodification. **La Main, Foncièrement culturelle** was launched as a cooperative community land trust dedicated to Alternative & Independent Cultural Places (AICP) in order to organise concrete and collective tools for collective ownership and advocacy.

## SOCIAL & SOLIDARITY ECONOMY REAL- ESTATE

### Support the socio-economic and spatial structuration :

Narrative development and promotion of the artistic and collective project; co-creation of social, cultural, and artistic utility indicators; strengthening the governance and SSE.

Architectural programming : alignment with the space socio-economic model, activities, and identity of organizations occupying the space.

Local cooperation: collective diagnosis; consultation and co-creation processes with residents, local stakeholders, and institutional partners; facilitation of collective and citizen-led projects.

## RESEARCH ACTION PROGRAM

**“Places, Artistic Practices and Ecological Transition”.**

## STRATEGY FOR COLLECTIVE PROPERTY & CONTROL

### Real Estate Engineering:

Design a long-term real-estate strategy; negotiation with partners (local authorities, developers, users); refining spatial programming and assessing construction costs; preliminary studies a monitoring.

### Legal Engineering:

Structuring the legal entity ; drafting legal documents to regulate relationships and uses (leases, partnerships, conventions, statutes).

### Financial Engineering:

Development of a financial plan involving partners; support for institutional and citizen-driven fundraising.

### Real Estate Engineering:

In cooperation with research centers, universities, networks and cultural venues, it is structured around the following axes:

**AXIS 1** - Places as artistic and cultural infrastructures in the face of the transition imperative

**AXIS 2** - Places as spaces for artistic and ecological practices

**AXIS 3** - Places as spaces for the emergence of new eco-cultural professionalization paths

## ECOLOGICAL & ARCHITECTURAL TRANSITION OF BUILDINGS

### Support for Technical Engineering:

Assistance with energy and architectural diagnostics; programming for space development, rehabilitation, and compliance with accessibility and ecological transition standards.

### Rehabilitation through technical and social innovation:

Sourcing and reusing materials, promoting resource sharing, and enhancing technical skills across functions and professions.



## Citizens mobilised for a sustainable region



Taking concrete action for the  
ecological and social transition

Local production of solar energy  
by and for local residents



Raising awareness energy  
conservation



plaine-energie-citoyenne.fr  
contact@plaine-energie-citoyenne.fr

The purpose of our collective is to bring together all the stakeholders - citizens, local authorities, associations and businesses - who want to **act and contribute at their own level to the energy transition**, and who wish to **develop the local production of renewable energies** in the Plaine Commune area, by :

- promoting energy management by raising awareness of energy efficiency and conservation
- maximising the social, economic and environmental benefits for the area

Plaine Énergie Citoyenne (PEC) is a collective comprising **an association** (responsible for raising awareness) **and a cooperative** (responsible for technical aspects and investments).

In practical terms, PEC is organising its action in 4 stages:

1

**Mobilising citizens and motivated players on the energy issue.** This involves raising awareness and providing training for the general public, local residents and schoolchildren.

2

**Identifying potential production facilities and sites.** In very dense urban areas, our first targets are the roofs of public buildings on which solar panels can be installed to produce electricity.

3

On these identified roofs, **work with volunteers to carry out simple pre-feasibility calculations**, gather information and visit the sites to check whether it would be worth going further.

4

Of the 10 or so roofs identified, 1 will require studies by professionals, to be launched and financed by the cooperative. **The cooperative will then manage the development of the project**, from the legal arrangements to the construction and operation. During this phase, which can last from 2 to 4 years, the association continues to mobilise the public. The work is then financially balanced by the resale of the electricity produced.



Welcome !  
Bienvenue !

# Plaine Commune

Plaine Commune comprises nine towns to the north of Paris, in the Seine-Saint-Denis département:  
**Aubervilliers, Épinay-sur-Seine, L'Île-Saint-Denis, La Courneuve, Pierrefitte-sur-Seine, Saint-Denis, Saint-Ouen, Stains and Villetaneuse.**

Today, **409,000 inhabitants live on the 5,000 hectares** of this area, half the size of Paris.

Plaine Commune has a richly diverse population, strong economic activity, a dense transport network, major waterways (the Seine, the Canal) and two departmental parks.

Plaine Commune is recognized as a **Territoire de la culture et de la création** : it accompanies the changes taking place in the area, with the aim of making culture and creativity the common thread running through its development.



# Program Overview

## Wednesday 2 April

**3:00 - 5:00 pm** (only WP leaders) Steering Committee at [Mains d'Oeuvres](#)

**5:30 pm** (all participants) Arrival pot at [Jardin de traverses](#)

**5:30 pm** (all participants) Arrival pot at [Jardin de traverses](#)

## Thursday 3 April

All the day at [Mains d'Oeuvres](#) | Star Trek room

**9:00 - 9:30 am** Welcome coffee

**9:30 - 10:00 am** Green Kommon, Culture & Citizen engagement for EnR.

**10:00 - 11:00 am** Discussion : What brings us together ?

**11:00 - 1:30 pm** Each partner prepares a short presentation : review of context, actions, goals by the [Pecha Kucha method](#). 6'40" per pilot

**1:30 - 2:30 pm** Lunch break

**2:30 - 4:00 pm** Workshop : Explore the stages of a citizen's renewable energy project !

**4:30 - 5:30 pm** Let's share research strategies

**5:30 - 7:30 pm** Let's have a drink !

**7:30 pm** Dinner

## Friday 4 April

**9:30 - 11:30 am** Visit to 2 cultural places of POT KOMMON | Good practices exchanges, artistic cooperation & renewable energy: [Les Poussieres](#) and [La Villa Mais d'Ici](#)

**12:30 - 14:00** Lunch break & Wrap up at [La Villa Mais d'Ici](#)

### OPTIONAL

**5:00 - 7:00 pm** Podcast Live "Energy & Mobility" & drink at [La Serre Wangari](#)

# Venues

## @Jardin des Traverses



- Energy school container
- greenhouse + biochar
- urban vegetable garden
- Beer & music

Wednesday

All @6pm

## @Mains d'oeuvres



- Cultural Center
- Citizen engagement venue
- Art residencies

Wednesday

Steering Co @3-5 pm

Thursday

All @ 9:30 am, day

## @Les poussières



- Cultural Center
- Citizen engagement venue
- Art residencies

Friday

All @ 9:30 am

## @ Villa mais d'ici



- Cultural Center
- Citizen engagement venue
- Art residencies

Friday

All @ 11:30 am

## @Serre Wangari



- Circular Economy program
- Resilient City Venue
- City Bulding

Friday

@ 5:30 pm

optional

# Getting around

Paris's public transport is both efficient and reliable, taking you to all corners of the Île de France region. As long as you know certain things...

The metro, trams, trains and busses can all be accessed with **two different tickets** :

- **The Ticket Métro-Train-RER:** at a single price of €2.50, it allows you to travel on the metro, train or RER throughout the Paris region (with exceptions such as airport stations).
- **Ticket Bus-Tram:** at a single price of €2, this ticket allows you to travel on buses and streetcars (excluding T11, T12, T13) throughout the Paris region (except Orlybus, Roissybus).

These two tickets can be loaded onto :

- Passe Navigo Easy
- Phone (or connected watch)

To get to or from airports, you can take a bus :

- **OrlyBus:** €10.30 (paperless) or €11.50 (paper ticket)
- **OrlyVal:** €11.30
- **RoissyBus:** €14.50 (paperless) or €16.60 (cardboard ticket)

But you can also take the RER or metro (same price but faster, and maybe more practical!).

We highly recommend downloading **CityMapper**, an application that advises you on the best (and fastest) routes to take.



# Sleeping



## **Mob Hotel of the people**

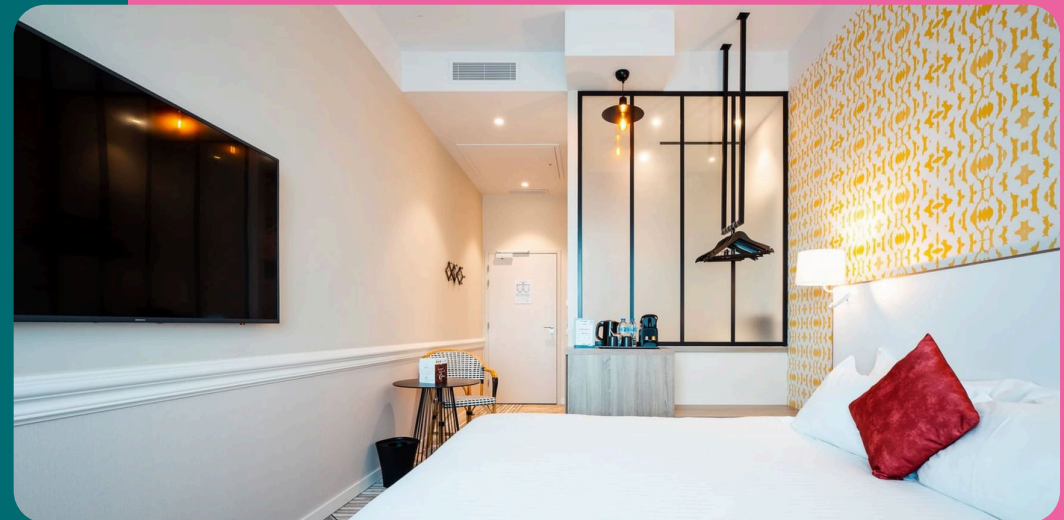
Saint-Ouen-sur-Seine (93400)

[mobhotel.com](http://mobhotel.com)

## **Hôtel Maison Montmartre**

Paris (75018)

[theoriginalshotels.com](http://theoriginalshotels.com)



# Visiting Plaine Commune

Marché aux Puces de  
Saint-Ouen

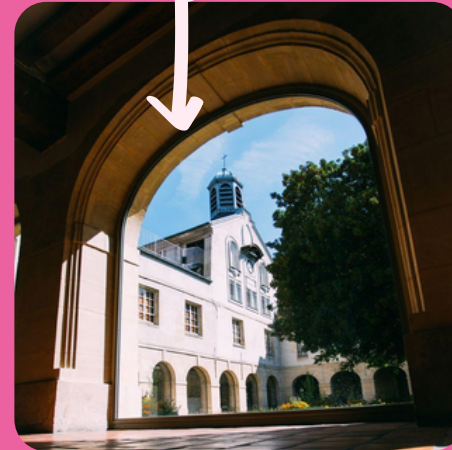


Basilique Cathédrale de  
Saint-Denis

Street Art Avenue  
(Saint-Denis)



Musée d'art et d'histoire  
Paul Eluard (Saint-Denis)



Stade de France  
(Saint-Denis)



## The must-haves Les incontournables

More information : <https://www.tourisme-plainecommune-paris.com/>

# We can't wait to see you !

If you have any questions,  
please do not hesitate to contact us.



**Vincent Guimas**

[vincent.g@greenkommon.eu](mailto:vincent.g@greenkommon.eu)



**Josephine Dresler**

[josephine.d@lamain-fonciere.coop](mailto:josephine.d@lamain-fonciere.coop)



**Rémy Prat**

[prat.remy@orange.fr](mailto:prat.remy@orange.fr)



**Clara Sanchez**

[clara.sanchez@plaine-energie-citoyenne.fr](mailto:clara.sanchez@plaine-energie-citoyenne.fr)



**Laura Aufrère**

[Laura.a@lamain-fonciere.coop](mailto:Laura.a@lamain-fonciere.coop)



**Juan Teruel**

[juan.teruel@plaine-energie-citoyenne.fr](mailto:juan.teruel@plaine-energie-citoyenne.fr)